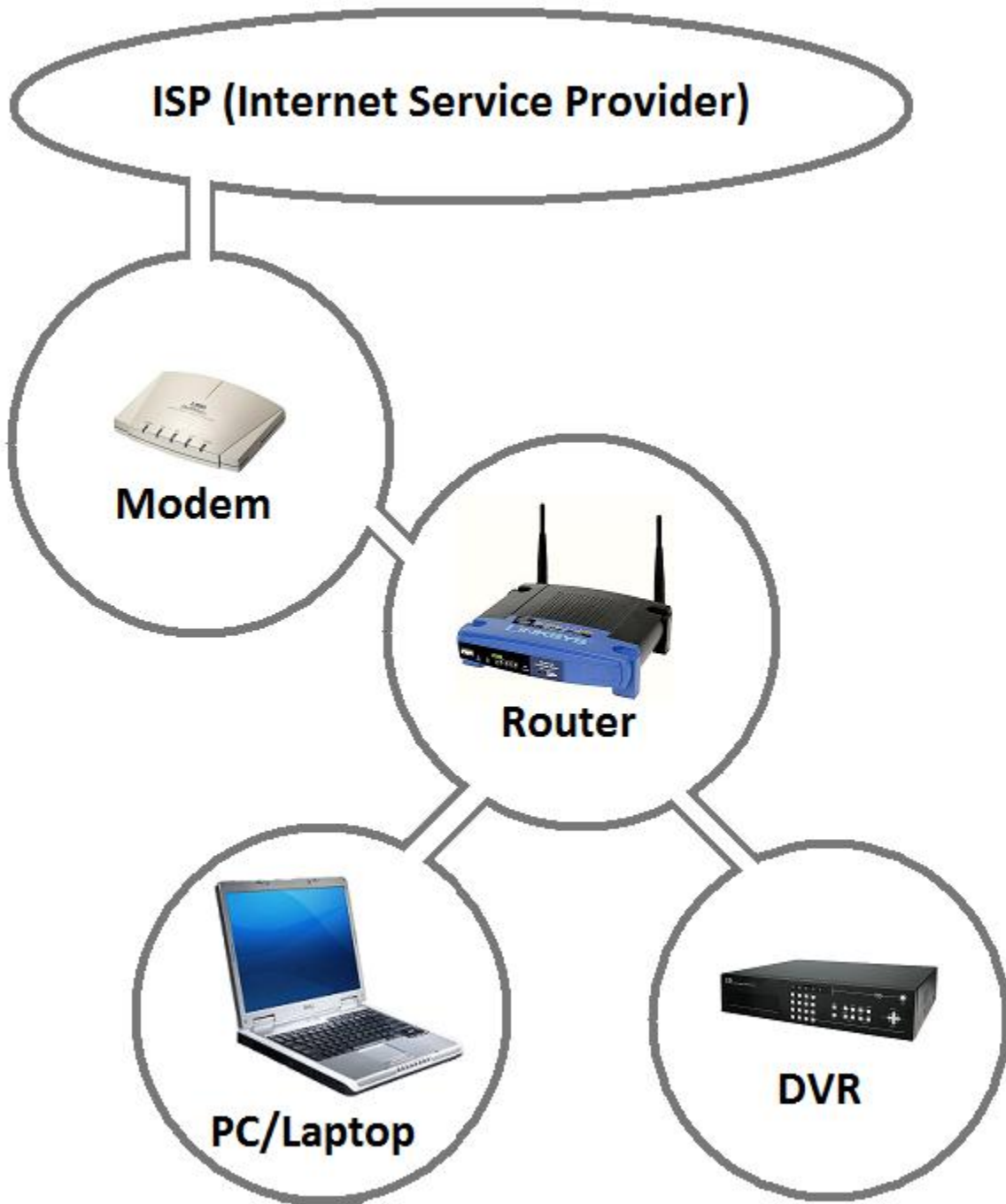
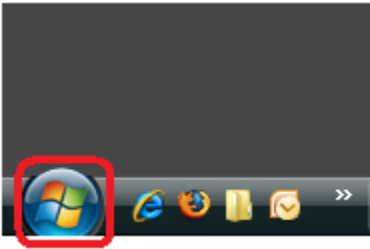


1. Your network connection

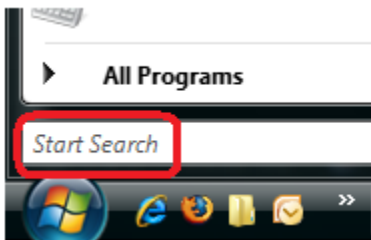


2. Find your PC's and Gateway's IP Addresses

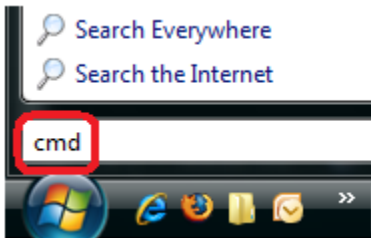
For Windows Vista:



1. Click on "Start" on the lower left corner of your desktop



2. Find the "Start Search" text area, it is at the lower left corner of the Start menu



3. Type in "cmd" and hit the Enter key, a window with black background and white text will appear

```
Microsoft Windows [Version 6.0.6001]
Copyright (c) 2006 Microsoft Corporation. All rights reserved.

C:\Users> ipconfig
```

4. Type in "ipconfig" and hit the Enter key

```
C:\Users>ipconfig

Windows IP Configuration

Ethernet adapter Local Area Connection:

    Media State . . . . . : Media disconnected
    Connection-specific DNS Suffix . :

Wireless LAN adapter Wireless Network Connection:

    Connection-specific DNS Suffix . : nyc.rr.com
    Link-local IPv6 Address . . . . . : fe80::e844:3ba1:73ca:fda1%11
    IPv4 Address. . . . . : 192.168.1.101
    Subnet Mask . . . . . : 255.255.255.0
    Default Gateway . . . . . : 192.168.1.1
```

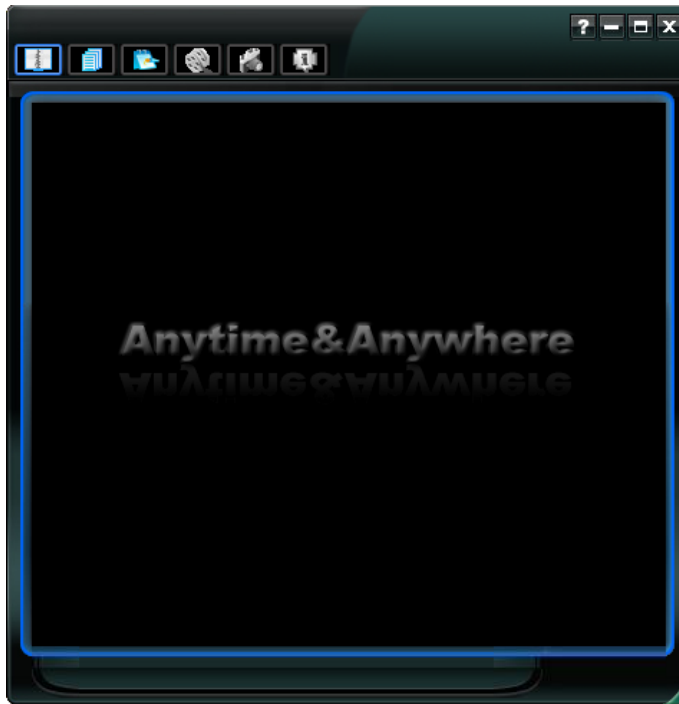
5. Find your IP address and Gateway address here.
IPv4 address :192.168.1.101
(This is your PC's IP address, and it may be different from the one shown)
Default Gateway :192.168.1.1
(This is your Router's IP address, and it may be different from the one shown)

For Windows XP:

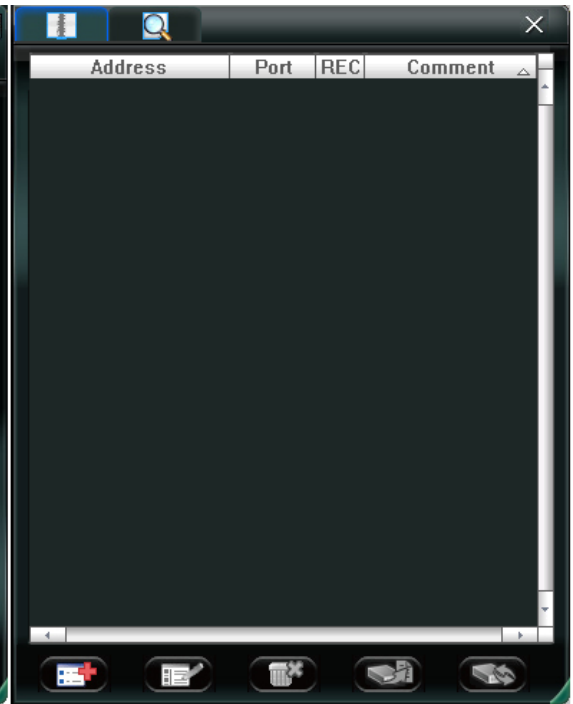
1. Click on "Start" on the lower left corner of your desktop
2. Select "Run", a small window with a text area will appear
3. Type in "cmd" and hit the Enter key, a window with black background and white text will appear
4. Type in "ipconfig" and hit the Enter key
5. Find your IP address and Gateway address here.
IP address :192.168.1.101
(This is your PC's IP address, and it may be different from the one shown)
Default Gateway :192.168.1.1
(This is your Router's IP address, and it may be different from the one shown)

3. Configure DVR's IP

Install Remote viewing software (VideoViewer) and launch it.



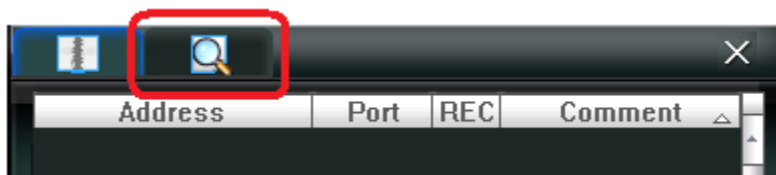
Main window



Address Book window



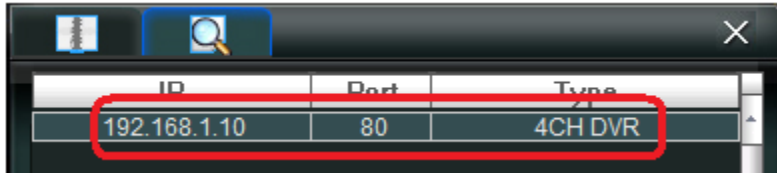
1. You should see Main window on the left and Address Book window on the right. If you cannot find the Address Book window, click on the "Address Book" button in the upper left corner of Main window.



2. In the Address Book window you will find two buttons on the top. Click on the "Search" button on the right.



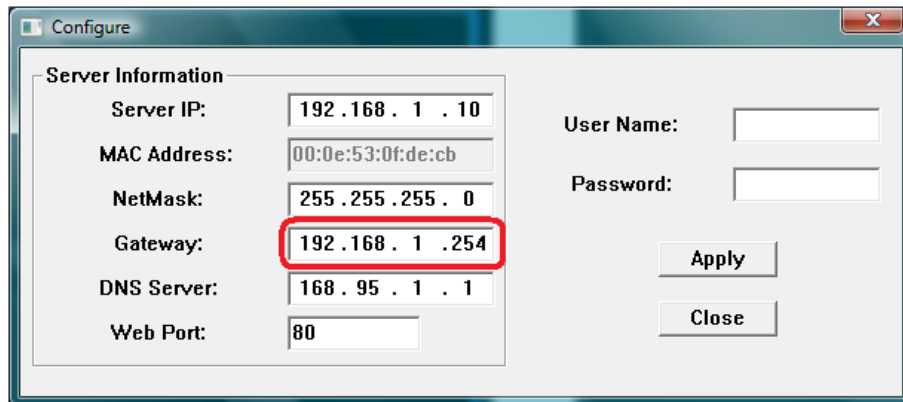
3. VideoViewer will now search for DVR that's connected under the same network as your PC/Laptop.



4. Your DVR's IP address will be shown on the top of the list, single click on the IP address to highlight it. **(NOTE: Your IP address might be different from the one in this example.)**

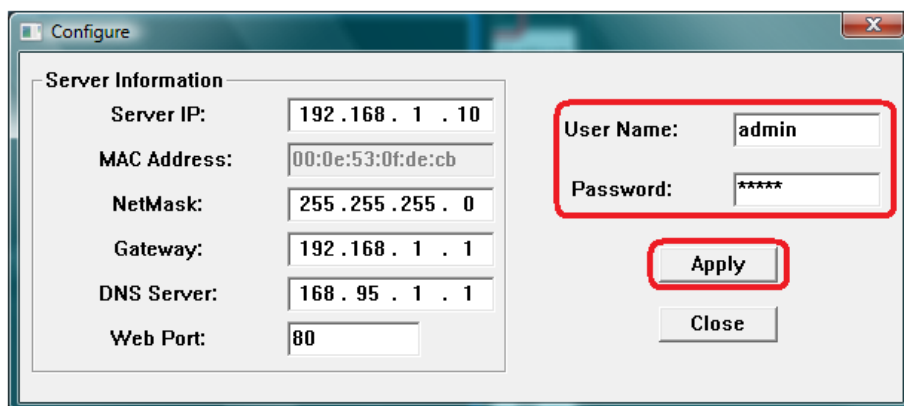


5. You will find a "Setting" button on the bottom, click on it after you have highlighted the IP address.



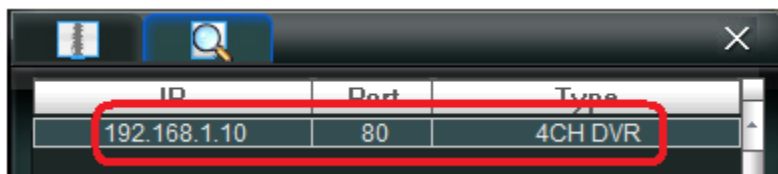
6. This is your DVR's current network setting. We want to change the Gateway address so it matches your Default Gateway. Please refer to section 2 **Find your PC's and Gateway's IP Addresses** to find out what is your Default Gateway's address. **(NOTE: Your Gateway address might be different from the one in this example.)**

*If your PC's IP address is the same as the Server IP (192.168.1.10), change the Server IP to: 192.168.1.11

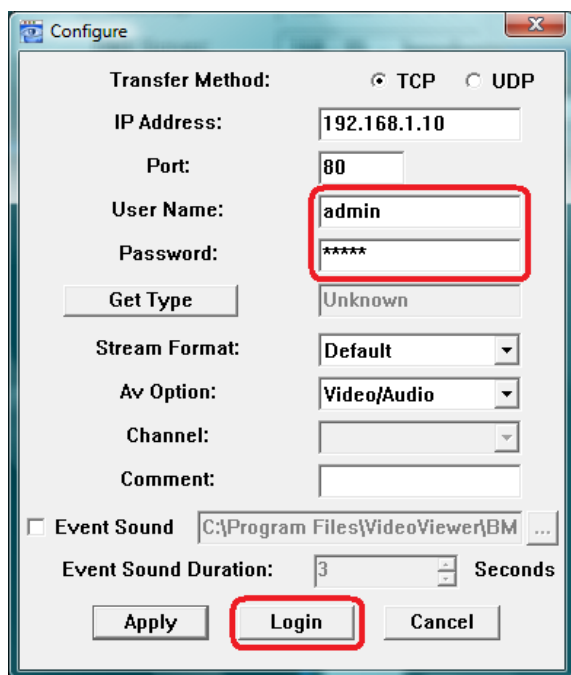


7. Changed Gateway from 192.168.1.254 to 192.168.1.1. When you are finished editing your Gateway address, enter the User Name and the Password, and then hit "Apply". Your DVR's new network setting will be registered automatically.

User Name: admin
Password: admin



8. Double click on the IP address.

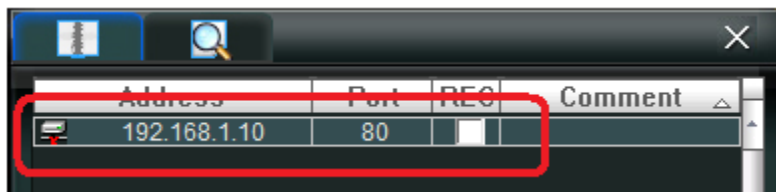


9. Enter the User Name and the Password, and then hit "Login".

User Name: admin
Password: admin



10. Congratulations. You are now connected to your DVR using *VideoViewer*.



11. This DVR's IP address, network setting, User Name, and Password will be stored in the Address Book automatically. When you wish to connect to your DVR again using *VideoViewer*, simply double click on its IP address in the Address Book.